

Entrust Credentials for Citizen eID

Identity-Based Security for Citizen Identities

From citizen eID cards to strong user authentication, governments seek proven methods to provide secure citizen access to eGovernment applications and services. Wherever strong authentication, encryption or digital signatures can enable governments to maintain data privacy, streamline workflow or enable citizen access, Entrust can help.

For citizen eID credentials, digital certificates, unified smartcards, strong authentication and more, Entrust provides end-to-end security solutions for citizen-centric environments and the protection of digital identities.

Entrust helps governments design, deploy and manage all aspects of today's necessary citizen eID environments:

- **Entrust Managed Services PKI** for digital certificates and digital signatures
- **Entrust IdentityGuard** for a versatile platform to enable second-factor authentication
- **Entrust Credentialing Services** for the production and full-lifecycle management of multipurpose smartcards and credentials
- **Entrust PKI** for ePassports and eMRTDs

Flexibility, Scalability for Governments

Entrust provides governments — and their respective ministries, departments and bureaus — strong authentication solutions and services appropriate for entire citizen populations. This includes everything from single applications to specialized uses such as ePassports.

Digital Certificates — Secure Identities, Facilitate Transactions

A leader in PKI, Entrust offers governments the ability to establish and maintain a trustworthy environment by providing digital certificates that secure many off-the-shelf applications using encryption, digital signatures and strong certificate authentication. Entrust solutions enable governments to control access to resources, prevent theft of information and comply with privacy and digital signature regulations.

Digital certificates enable digital signature functions that protect the integrity of eGovernment and private-sector forms and transactions, and also provide evidence communication or transactions were authorized.

Entrust Citizen eID Solution

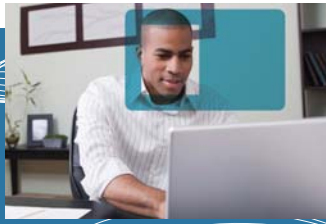
Comprehensive solutions for:

- ePassports, eVisas and other eMRTDs
- Government eIDs
 - o Hard and soft form factors
 - o Flexible authentication choices from a single platform

Entrust solutions are:

- Deployed by top 13 eGovernments in the world
- Used by more than 35 countries worldwide and more than 60 U.S. federal agencies
- Securing more than 50 percent of the world's ePassports
- Utilized by more countries for second-generation (EAC) ePassports than any other EAC ePassport solution





Entrust's citizen eID infrastructure can either be newly established or extended from an existing government Entrust PKI, such as an ePassport deployment, and provided either as software to be installed in-house or from a managed service.

Versatile Authentication Platform for Citizens

The Entrust IdentityGuard versatile authentication platform provides the most authenticators on a single platform. Its cost-effective nature affords scalability to mass populations, but also boasts the versatility to provide the strongest levels of authentication available.

Available authentication capabilities include username and password, IP-geolocation, device, questions and answers, out-of-band one-time passcode (delivered via voice, SMS or e-mail), grid and eGrid cards, digital certificates (in software or on smart cards/USB Tokens) and a range of one-time-passcode tokens, including Entrust IdentityGuard Mobile.

Entrust IdentityGuard allows organizations and governments to deploy strong authentication to internal users, citizens, partners and contractors — all from a centrally managed platform. Deploy the right authenticator to different user groups based on the amount of associated risk, unique user requirements and cost.

A Service for Multipurpose Identity Credentials

Proven in real-world deployments, Entrust Credentialing Services enable governments to replace multiple passwords, passcards, tokens and other identification documents with a single unified credential. The credential can be used electronically to prove identity, encrypt e-mails and streamline access to eGovernment programs, services and applications.

About Entrust

Entrust provides identity-based security solutions that empower enterprises, consumers, citizens and Web sites in more than 4,000 organizations spanning 60 countries. Entrust's identity-based approach offers the right balance between affordability, expertise and service. For strong authentication, fraud detection, digital certificates, SSL and PKI, call 888-690-2424, e-mail entrust@entrust.com or visit www.entrust.com.

Entrust[®] Securing Digital Identities & Information

Entrust is a registered trademark of Entrust, Inc. in the United States and certain other countries. In Canada, Entrust is a registered trademark of Entrust Limited. All other Entrust product names and service names are trademarks or registered trademarks of Entrust, Inc. or Entrust Limited in certain countries. All other company names, product names and logos are trademarks or registered trademarks of their respective owners. © 2010 Entrust. All rights reserved.

Entrust's credentialing service includes all necessary components, including identity vetting, data capture, personalization, printing, issuance and revocation. Entrust manages the entire credential lifecycle for an organization, eliminating complexity and displacing the need for multiple vendors for a single, cost-effective service.

Advanced ePassports

Based on Entrust's trusted public key infrastructure (PKI) technology, Entrust ePassport security solutions enable a true point-and-click PKI system for strong border control and authentication of identities and biometric datasets on today's electronic machine-readable travel documents (eMRTDs).

Interoperable, scalable and validated by third-party testing, Entrust is the unquestioned leader in global ePassport security deployments. Entrust secures more than 50 percent of the world's ePassports; further, the Entrust Extended Access Control (EAC) ePassport solution is deployed by more countries than any other EAC ePassport solution.

More Information

For more information on Entrust Citizen eID solutions, contact the Entrust representative in your area at **888-690-2424** or visit www.entrust.com/government.

